

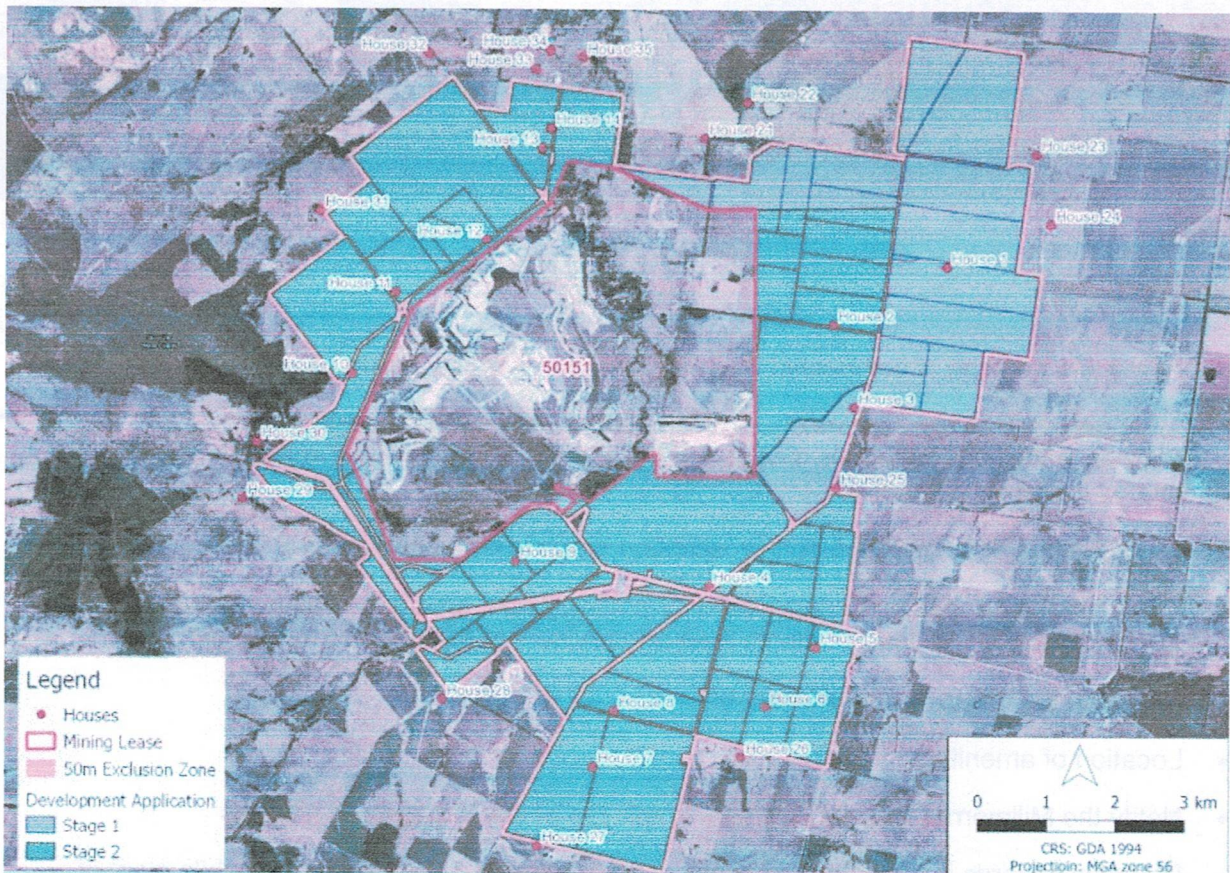


MILLMERRAN POWER CARBON FARMING PROJECT

SCOPE AND STRUCTURE OF PROJECT

The Millmerran Carbon Farming Project involves Environmental Plantings of native trees to abate Carbon.

- Supports federal government policy of proactive action to deliver Net Zero 2050
- Plant trees through 2027
- Up to 2,000ha of land



Welcome/presentation, covering –

- Aim of project.
- Scope of project.
- Length of project – Time etc.
- Funding source.
- Overview of the business.
- Relationship of the coal mine & power station.

Hi My name is Mark Norman.

On behalf of Millmerran Power and Zilmark Carbon farming welcome to YOU all !

happy to answer questions as we go.

We also have John Kennedy with us today who has been helping with the project for the last year.

Just some background John and I first met at Marcos Oldham ag college in 1988.

This is my 3rd Career. 1st was as a cotton and grain farmer in the Goondiwindi District, working for my parents' property then managing a 1,115 Ha corporate cotton farm at Boggabilla, then had a Home appliance rental franchise in Toowoomba and Ipswich with my wife Liz for 16 years. We a gap year during Covid traveling Australia, having 14 months visiting Gods great creation of Australia.

Have been working on this project since Dec 21.

The first stage was doing the feasibility study looking at various option,

The project is for the Millmerran Power station, on land they own.

This project draws on Millmerran Power Proud ESG History of building one of the most Efficient 850 MW (enough power for 1,000,000 people) power stations, using only 500ML of recycled water V's 16,000 ML used by similar size stations, using Coal from the adjacent Commodore Mine.

The project's scope is to establish native plants from seedling and seed over 2000ha in 5 years for the Millmerran Power Carbon Farming Project. To act as a buffer to the mine, improve local flora and fauna with ½ the seedlings planted being Koala food species, and to Sequester carbon.

The project will run for 30 years to meet the CER (Carbon Credits (Carbon Farming Initiative) (Reforestation by Environmental or Mallee Plantings - FullCAM) Methodology Determination 2014).

Today we will be visiting year one and year 2 of the project.

Year 1 -115 ha (284 acres)

Year 2 – 370 ha (914 acres)

The species we have planted so far:

Native's planted in 2023

Seedlings	Common Name	M	P	W
E. tereticornis	Queensland Blue Gum	X	X	X
E. molucanna	Gum-Topped Box	X	X	X
Corymbia variegata subsp. variegata	Spotted gum	X		
E. populnea	Poplar Box	X	X	X
Acacia harpophylla	Brigalow		X	X
E. sideroxylon	Narrow Leaved Red Ironbark	X	X	X
E. argophloia	Chinchilla White Gum	X	X	X
Pittosporum angustifolium	Gumbi Gumbi	X	X	X
Acacia salicina	Black sally wattle	X		X

Direct Seed	Common Name	A	B
Acacia harpophylla	Brigalow		X
Acacia salicina	Cooba		X
Pittosporum angustifolium	Gumbi Gumbi, Butterbush		X
Acacia deaneii	Deane's Wattle		X
Acacia implexa	Hickory Wattle		X
Acacia excelsa	Ironwood		X
Acacia pendula	Weeping Myall, Boree		X
Brachychiton populneus	Kurrajong		X
Myoporum montanum	Boobialla, water Bush		X
Dodonaea viscosa subsp. angustifolia	Hop Bush		X
Acacia decora	Western Golden Wattle		X
Senna artemisioides subsp. x petiolaris	Senna		X

Zilmark Carbon farming role as Consultant and Contractor using equipment supplied by the power station. Responsibilities include, deep ripping, ground prep, weed control - pre and post planting, planting seedlings planting seed, Sourcing seed and seedlings, watering, slashing, record keeping and helping with the Clean Energy Regulator Audits.